

STUDYING AT INSA TOULOUSE

July 2010

<http://www.insa-toulouse.fr>

Bienvenue à
L'Institut
National
Sciences
Appliquées



***Welcome to the
National
Institute of
Applied
Sciences***



***Founded in 1963 by the French
Ministry of Education and
Research***

Come to France

City of Toulouse

INSA Campus

Teaching





ARRIVAL IN PARIS





1 US \$ = 0.6 € (fluctuates)

Same money used in all Europe

England, Suizerland have kept their own money



Baguette (0.7€)

Croissant, chocolatine (1€)

Wine (2€ to 10,000€)

Basket-ball : thank you Tony Parker

Tennis: virtually everywhere

Foot (France World Cup 2010)



Franck Ribery, one of the best French Players

Rugby (Toulouse close to 1st)



Toulouse, founded in -
120 B.C

Roman foundations

Toulouse is a city in
southwest France on
the banks of the
Garonne River, half-
way between the
Atlantic Ocean and
the Mediterranean
Sea.

Toulouse city center:
500,000

Toulouse at large: nearly
1,000,000



TOULOUSE CITY



The Toulouse metropolitan area is the fourth largest in France and one of the fastest growing in Europe.

Capital of the South

Center of French aircraft industry Airbus

Also Aerospace industry

4nd largest student town after Paris, Versailles and Lyon (100,000 students)



St-Sernin Basilica (large
Romanesque church of brick
and stone, Gothic belfry)

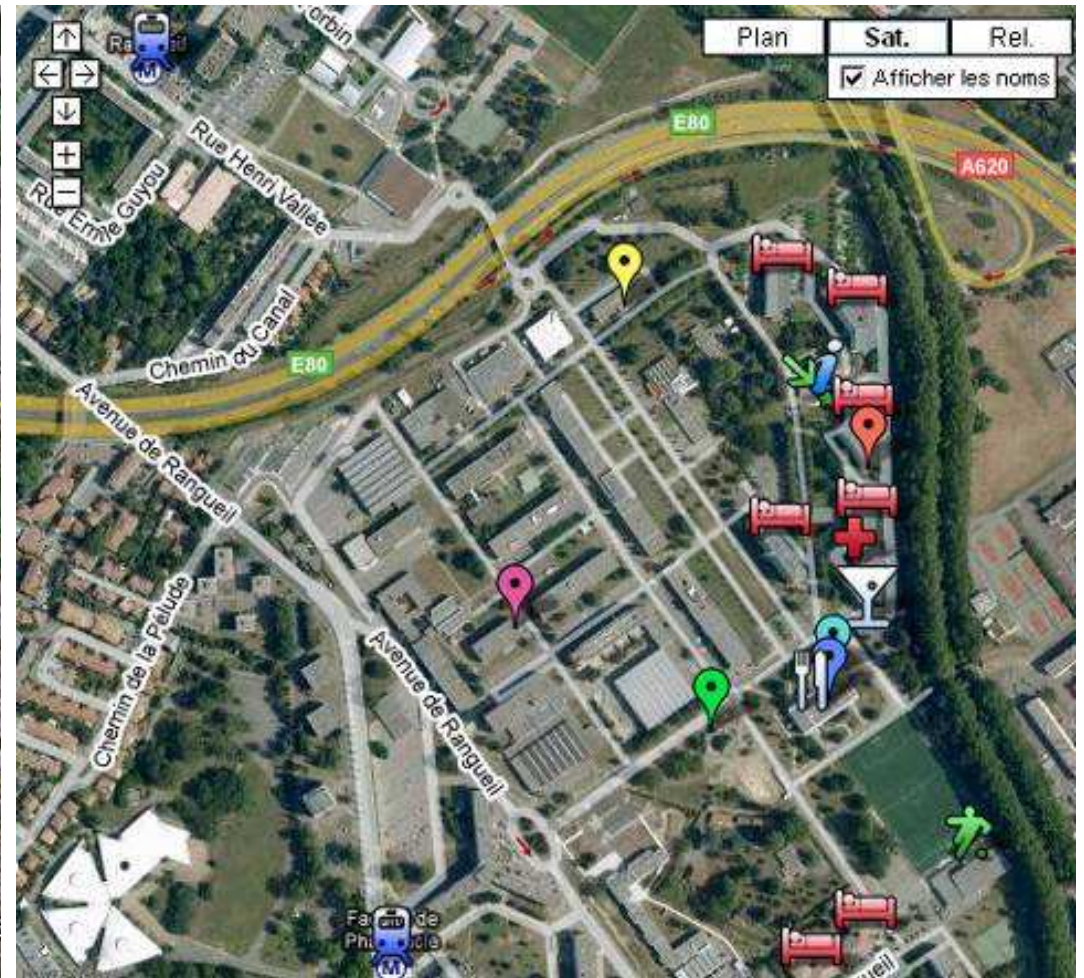
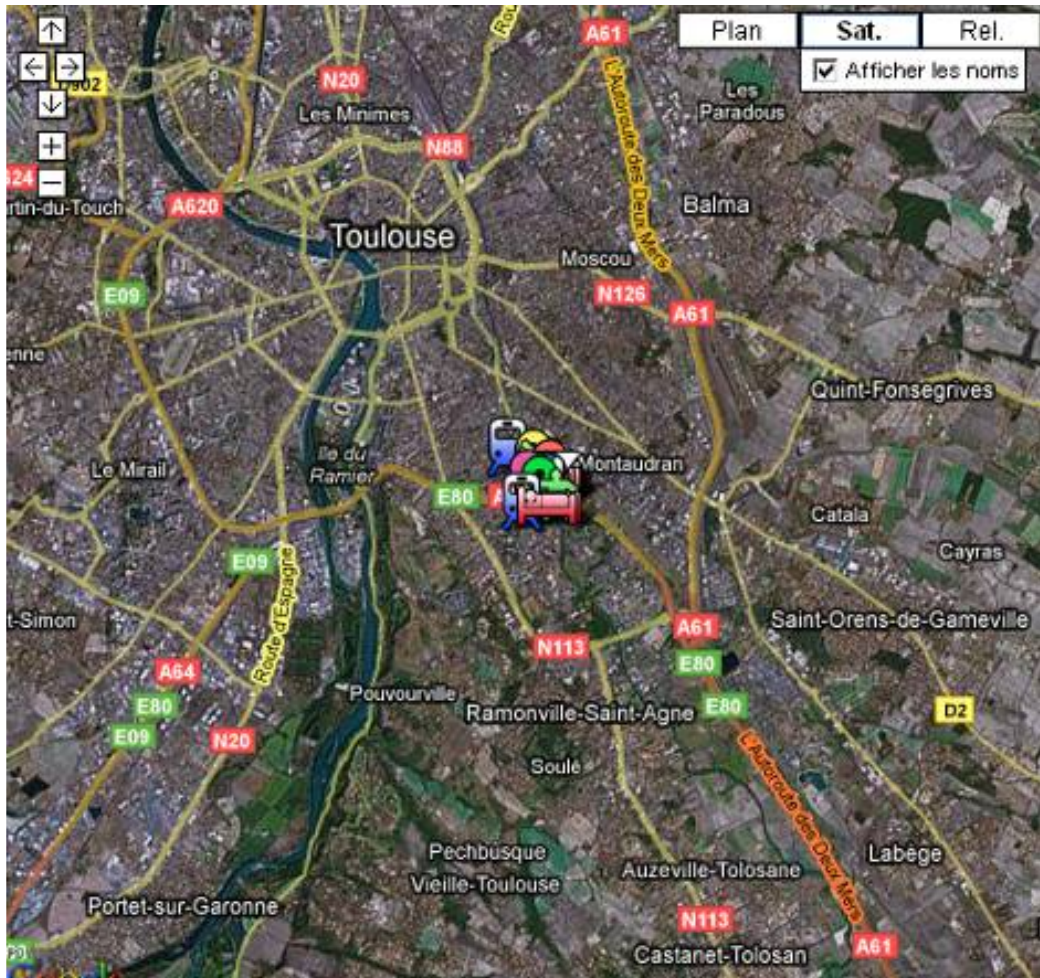
Church of Les Jacobins

Cite de L'Espace, visitors to this
unique science museum
discover the mysteries of the
Earth and Universe through
interactive exhibits and
displays.

Musee des Augustins



Bird's view





Conference Hall

Restaurant



Soccer-Rugby field



Residences

Library



Residences



Close to “Canal du Midi”, world-wide treasure UNESCO, « Royal Channel of the two seas », 1662, master piece of engineering (53 dams)





"Bureau des Etudiants d'Echange" (International Exchange Student Office) of INSA.

Overmotivated student team with international backgrounds who is going to take care of you.



- Help at arrival at Toulouse Airport
- Help for administration when arriving on the campus
- Discovery of Toulouse and its surroundings
- Nights for exchange students at the Ptit Kawa (a bar on campus),
- Linguistic partnership: a French student and an International one meet, go out, chat and exchange whatever they want!
- Organization of the International Week on campus: in October

297 foreign students in



25% of INSA

史丢姆

en 定理) fo



4
2

students

7
3

4
1

5
5



a
s

1
4
S

A
S
1
N

O
R
G

1
2

e
x
c
h

PROJECT-ORIENTED TEACHING

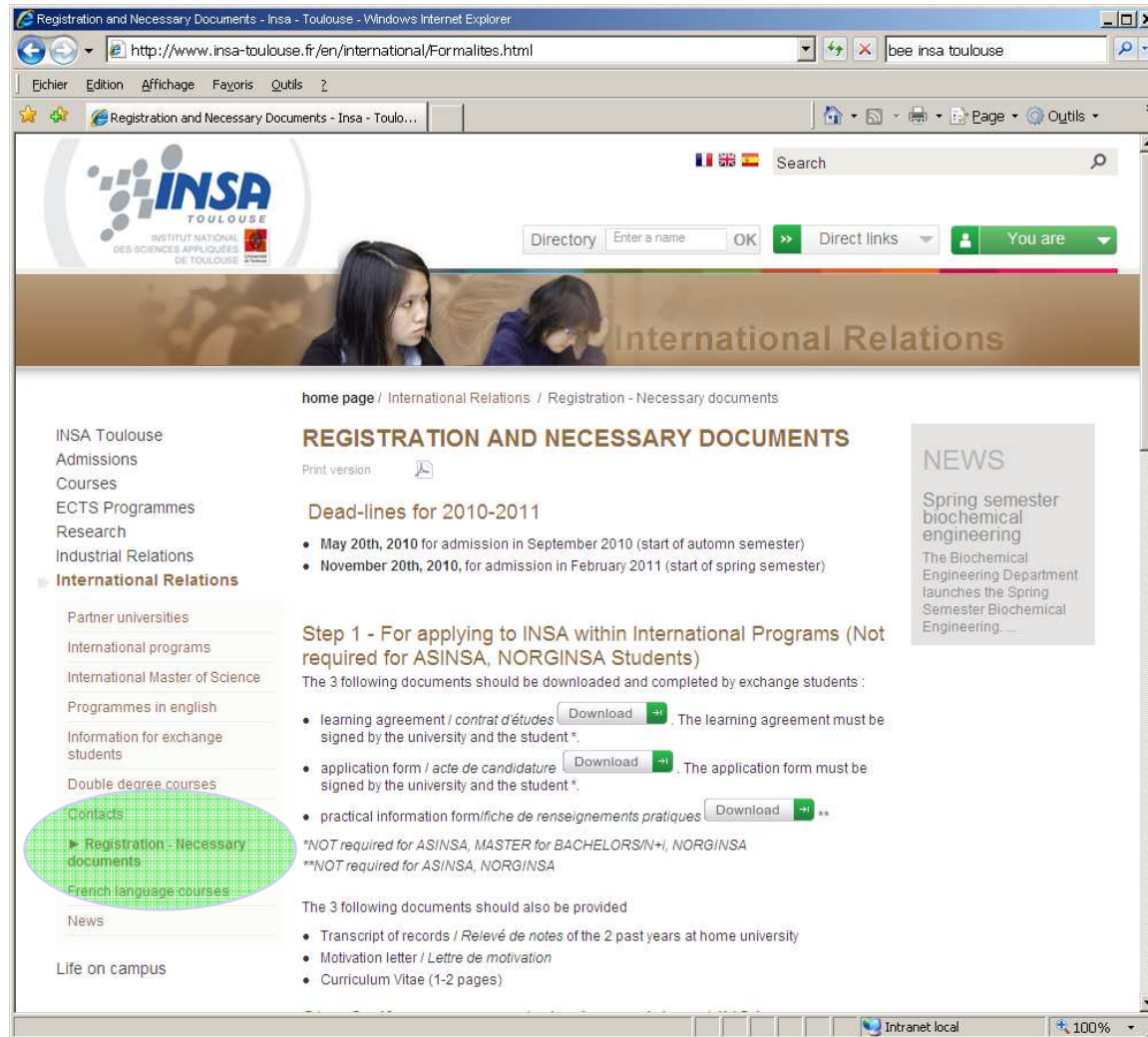


Web site: www.insa-toulouse.fr > international



The screenshot shows a web browser window displaying the 'International Relations' page of the INSA Toulouse website. The browser's address bar shows the URL 'http://www.insa-toulouse.fr/en/international.html'. The website header features the INSA Toulouse logo, a search bar, and a navigation menu with options like 'Directory', 'Direct links', and 'You are'. Below the header, there is a banner image of two students and the text 'International Relations'. The main content area is titled 'INTERNATIONAL RELATIONS' and includes a 'Welcome to Exchange Students' section. This section contains a photograph of a group of international students and text explaining the university's programs for international students, such as ERASMUS exchange, worldwide exchange programs, and specific programs for getting the INSA engineering diploma at undergraduate and master levels. A sidebar on the left lists various services and programs, including 'Partner universities', 'International programs', and 'International Master of Science'. A 'NEWS' section on the right highlights a 'Spring semester biochemical' article. At the bottom of the main content area, there are links for 'Contact', 'More', and 'List of documents required to apply to INSA as exchange'.

Applying to INSA



Registration and Necessary Documents - Insa - Toulouse - Windows Internet Explorer

http://www.insa-toulouse.fr/en/international/Formalites.html

Registration and Necessary Documents - Insa - Toulo...

INSA TOULOUSE

INSTITUT NATIONAL DES SCIENCES APPLIQUÉES DE TOULOUSE

International Relations

home page / International Relations / Registration - Necessary documents

REGISTRATION AND NECESSARY DOCUMENTS



Print version

Dead-lines for 2010-2011

- May 20th, 2010 for admission in September 2010 (start of autumn semester)
- November 20th, 2010, for admission in February 2011 (start of spring semester)

Step 1 - For applying to INSA within International Programs (Not required for ASINSA, NORGINSA Students)

The 3 following documents should be downloaded and completed by exchange students:

- learning agreement / *contrat d'études* [Download](#) . The learning agreement must be signed by the university and the student*.
- application form / *acte de candidature* [Download](#) . The application form must be signed by the university and the student*.
- practical information form / *fiche de renseignements pratiques* [Download](#) 

*NOT required for ASINSA, MASTER for BACHELORS/N/H, NORGINSA
**NOT required for ASINSA, NORGINSA

The 3 following documents should also be provided

- Transcript of records / *Relevé de notes* of the 2 past years at home university
- Motivation letter / *Lettre de motivation*
- Curriculum Vitae (1-2 pages)

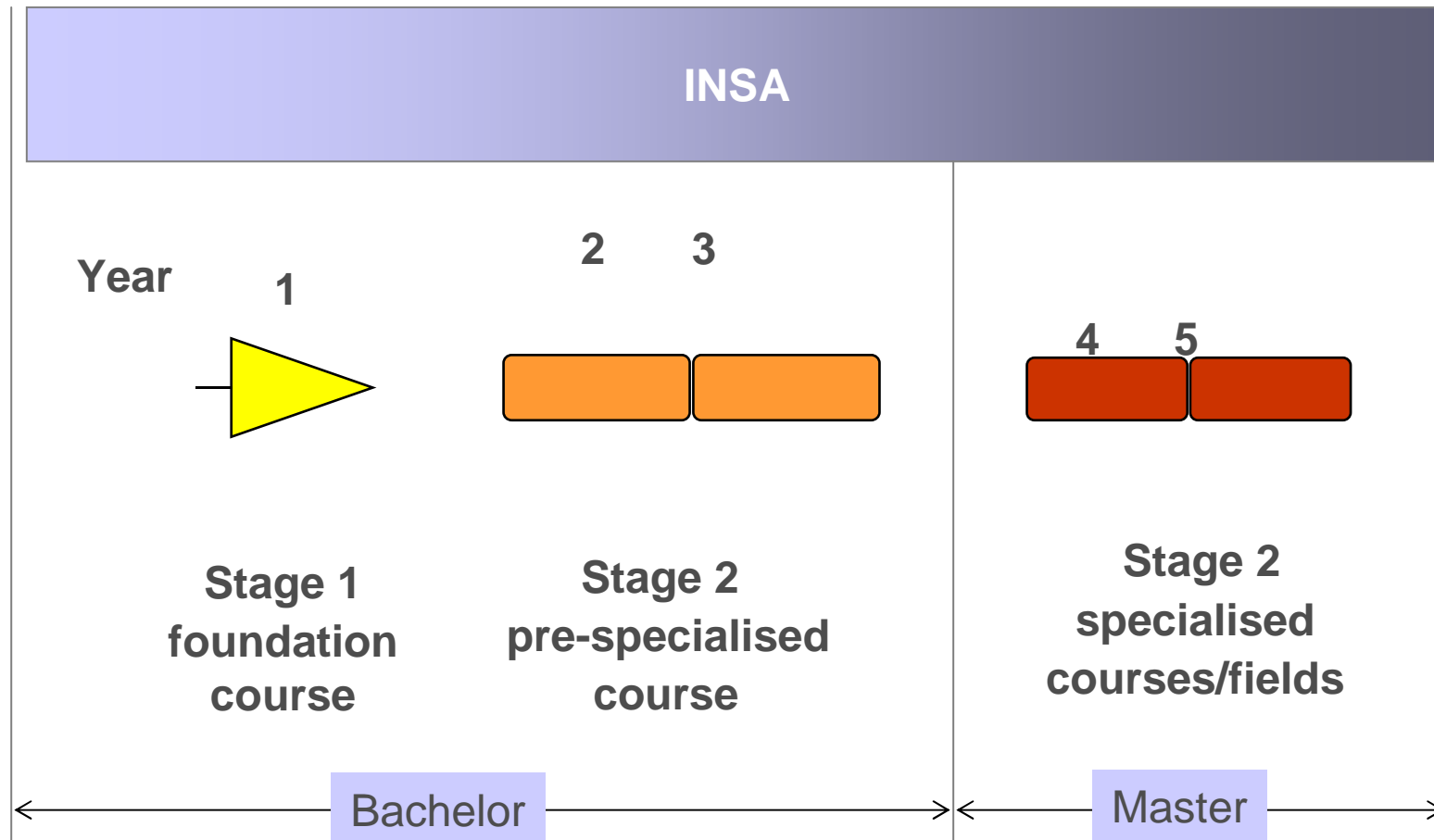
INSA Toulouse
Admissions
Courses
ECTS Programmes
Research
Industrial Relations
International Relations
Partner universities
International programs
International Master of Science
Programmes in english
Information for exchange students
Double degree courses
Contacts
Registration - Necessary documents
French language courses
News
Life on campus

NEWS
Spring semester biochemical engineering
The Biochemical Engineering Department launches the Spring Semester Biochemical Engineering...

Intranet local 100%



A FIVE-YEAR LMD CURSUS



CURRICULA DETAILS

Bachelor of Engineering (3 years)

Master of Engineering (2 years)

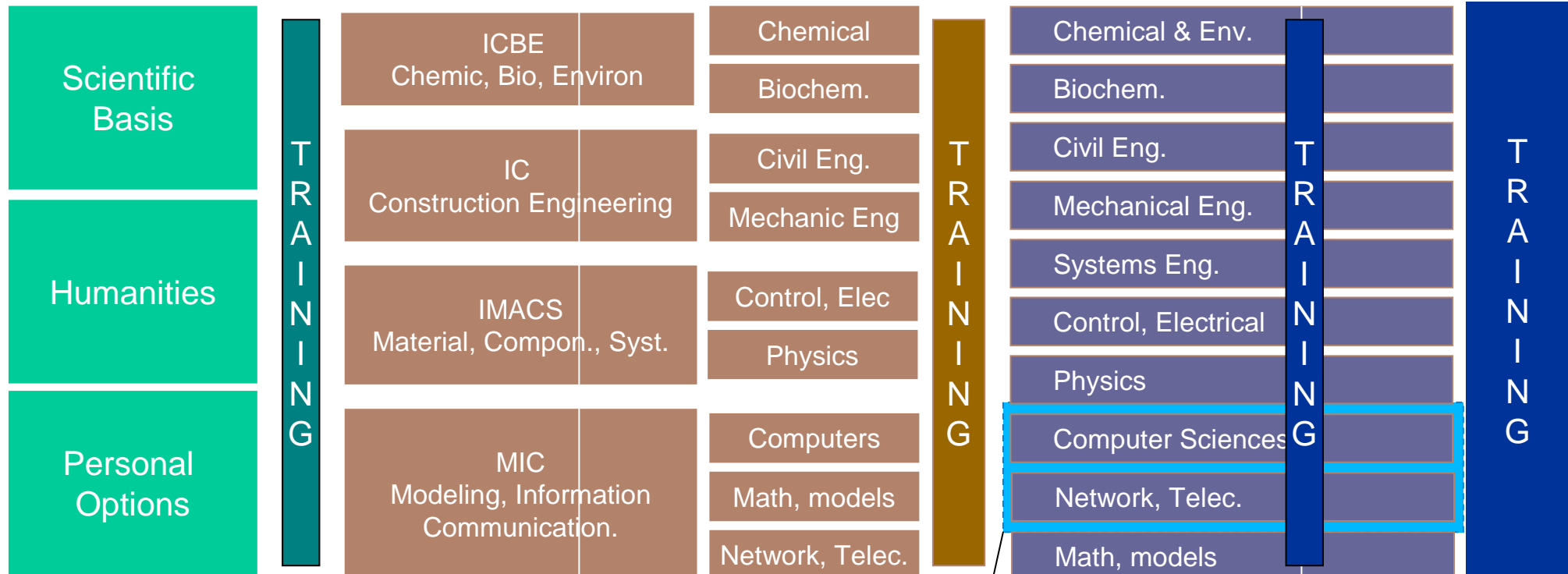
1st Year

2nd year
Pre-orientation

3rd year
Pre-orientation

4th year
Specialization

5th year
Engineer



Computer & Networks (2011)

DRI



Lucien BALDAS
Director intern. Relations
☎ 95 45



Danièle FROMONT
INSA student mobility
☎ 95 44



Claude MARANGES
ICBE-Génie Bio. Alim.
☎ 99 91



Alain BOYER
IC- Méca Ing. Syst
☎ 98 57



Jean-Marie DORCEL
IMACS-Autom. Elec, Génie Phy.
☎ 98 75



Etienne SICARD
Deputy-Director Int. Relations
☎ 95 43



Françoise SARRAILH
Foreign Students
☎ 95 42



Claire OMS
IC-Génie Civil - (incoming)
☎ 99 08



Sandrine ALFENORE
ICBE-Génie Proc. Envir.
☎ 97 59



Ariane ABOU CHAKRA
IC-Génie Civil (départs)
☎ 99 30



Marie-Jo ELIAS
Head of Service
☎ 95 49



Corinne PIERUCCIONI
Finances Travels
☎ 95 41



Danièle FOURNIER
MIC-Info-Réseaux- Génie Math. Mod.
☎ 98 43

Claire OMS
Génie Civil (incoming)
☎ 99 08

Dept. Coordinators



Claude BARON
Génie. Electr. Info. (Autom. Elec, Info, Réseaux-Telecoms)
☎ 98 35



Etienne PAUL
Génie Proc. Envir.
☎ 97 72



Ariane ABOU CHAKRA
Génie Civil (départs)
☎ 99 30



Claire OMS
Génie Civil (incoming)
☎ 99 08



Didier COMBES
Génie. Bio. Alim.
☎ 94 10



Gilles HEBRARD
Génie Proc. Envir.
☎ 97 89



Andrea BALOCCHI
Génie. Physique
☎ 96 40



Philippe FIORE
Humanities (CSH)
☎ 94 79



Michel CHAUSSUMIER
Génie. Méca, GSI (Incoming)
☎ 97 33



Stéphane COLIN
Génie. Méca, GSI (Départs)
☎ 99 55



Benoit TRUONG
Génie. Math. Mod.
☎ 99 86



Jean-Luc BAUP
Sport Center (APS)
☎ 93 83

1-3rd year Coordinators

Program Coordinators



Pierre MASSE
ASINSA (STPI)
☎ 98 55



Catherine BERAUD
ASINSA (G.méca)
☎ 97 37



Annie DESPATUREAUX
Coord. Chine (CSH)
☎ 94 85



Alain HUARD
NORGINSA (GMM)
☎ 93 39



Christelle GUIGUI
N+1 (GPE)
☎ 97 90



Claude MENY
NORGINSA (G. Phy)
☎ 96 69



Arnaud COCKX
Trans. Semester N+1 (GPE)
☎ 97 97



Bernard PRADIN
Coord. Maroc (GEI)
☎ 98 22

THANK YOU!



Lucien BALDAS
Director for International Relations
lucien.baldas@insa-toulouse.fr



Etienne SICARD
Deputy-Director for International Relations
etienne.sicard@insa-toulouse.fr

More information : www.insa-toulouse.fr > international